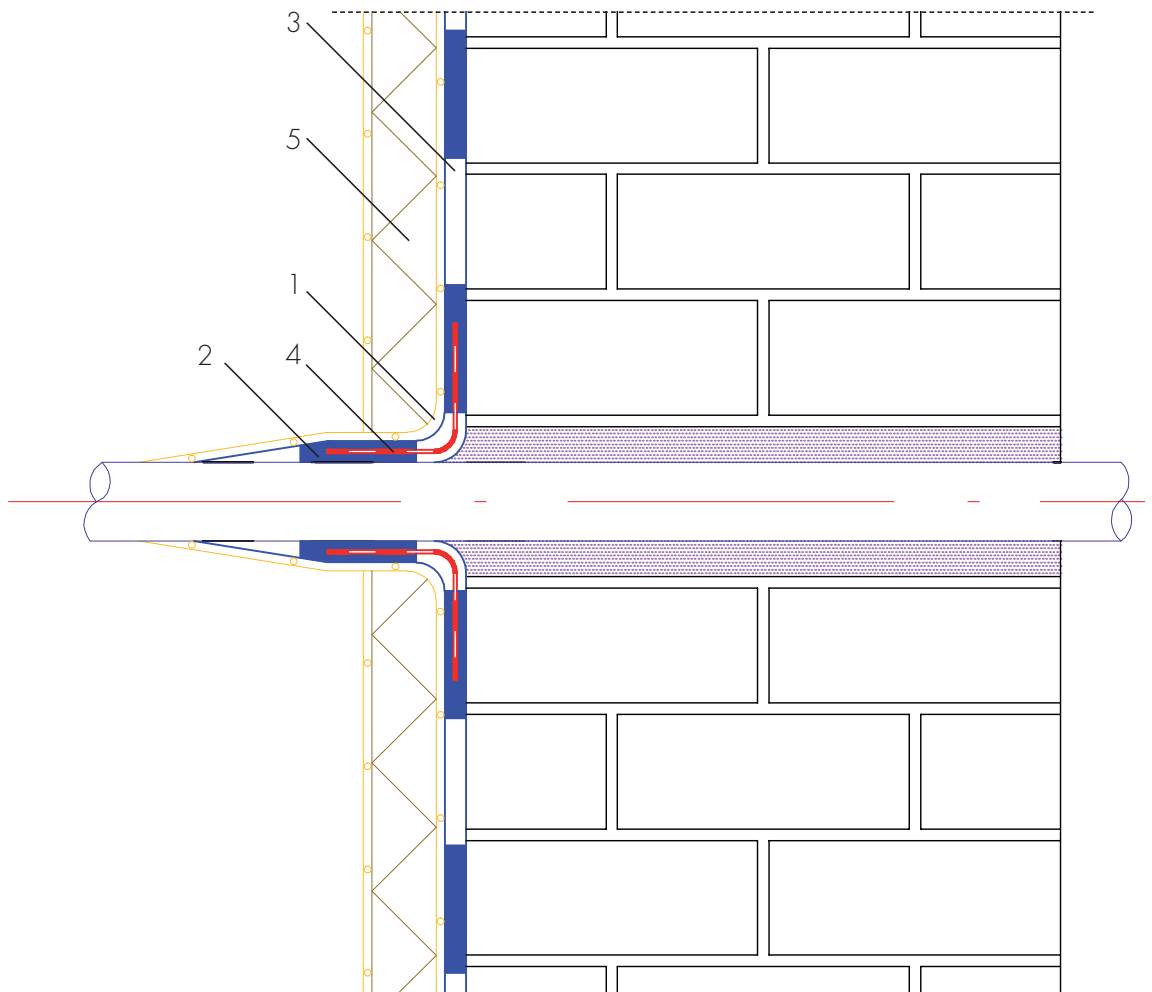


**Pipe penetration waterproofing with  
AQUAFIN®-2K or AQUAFIN®-2K/M**

(Load: ground moisture and non rising seepage water )



- 1 Cove with  $R > 4$  cm formed with ASOCRETRN cementitious mortar
- 2 Pipe surface abraded and degreased with Universal Cleanser
- 3 AQUAFIN-2K or AQUAFIN-2K/M waterproofing
- 4 ASO-Joint-Sleeve sealing gasket
- 5 Waterproofing protection layer with INA Schutz- und Drainelement (INA-Protective board)