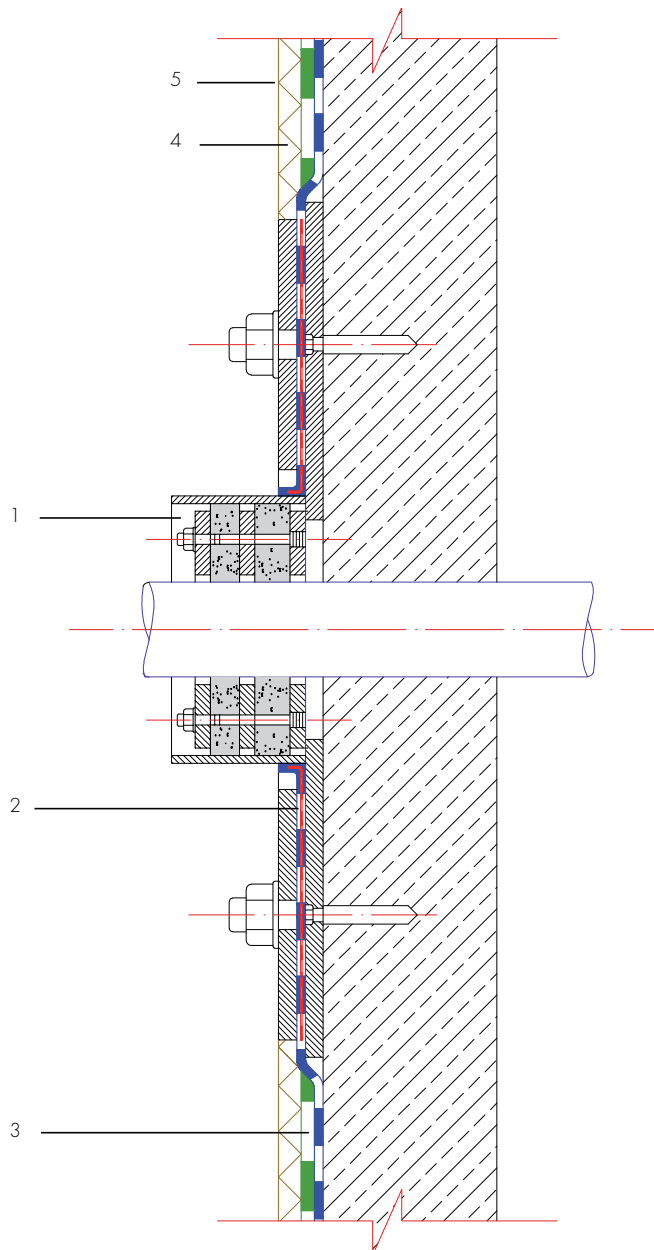




Pipe penetration waterproofing with COMBIFLEX®-High Build System

– According to factory specifications –



- 1 Pipe penetration with fixed and loose flange
(For example manufacture by Doyma GmbH)
- 2 Waterproofing on fixed and loose flange with AQUAFIN-RS300 or AQUAFIN-2K/M
and a suitable SCHOMBURG-Joint-Tape (see technical data sheet)
- 3 Waterproofing with COMBIFLEX-High Build System
- 4 ASO-Systemvlies-02 protective mesh
- 5 Waterproofing protection layer through suitable measures