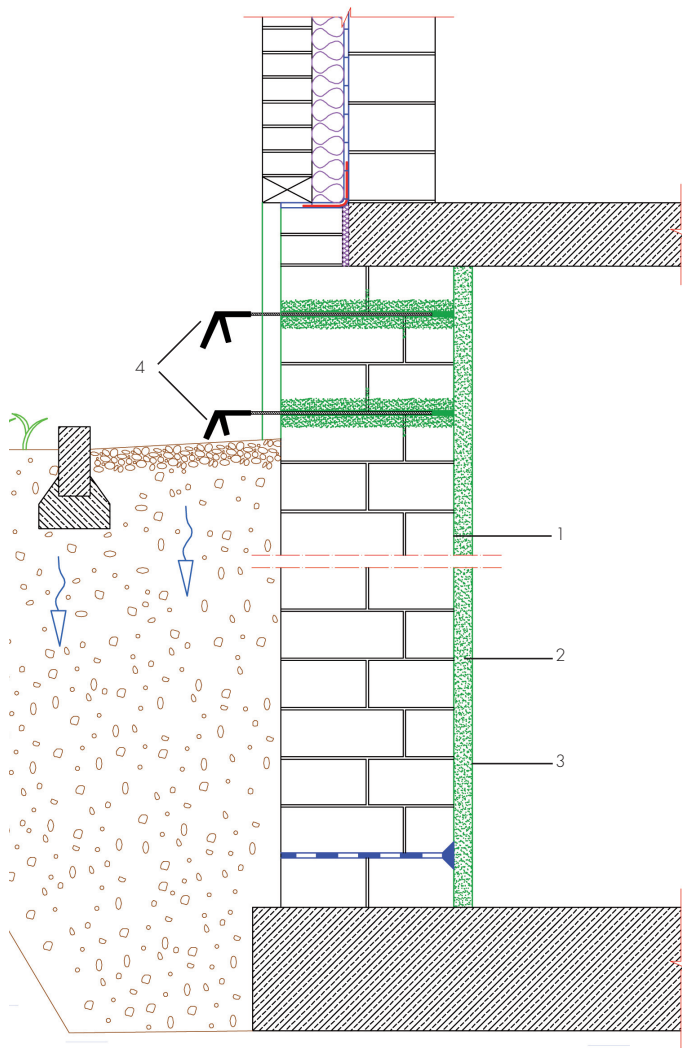


Horizontal barrier from outside



1. Salt treatment with ESCO-FLUAT
 2. Semi-covered rough cast THERMOPAL-SP
 3. Restoration plaster THERMOPAL-SR24 or THERMOPAL-SR44
 4. Horizontal barrier with AQUAFIN-F or AQUAFIN-IB2
- Horizontal barrier: With pressure:
Hole depth: brick ././ 5 cm
Hole distance: 10 - 12 cm
Height offset: 8 cm