



Cementitious waterproofing slurries in waterproofing.

Reliable protection against water penetration.
Rigid and flexible cementitious waterproofing for safe construction progress.

Problems Solved.





Cementitious waterproofing slurries

Safe solutions for waterproofing

For more than 50 years, the name AQUAFIN stands for safe waterproofing. Cementitious waterproofing slurries of SCHOMBURG are the perfect solution for everyday and special demands in construction.

Rapid hybrid waterproofing is ensured by AQUAFIN-RS300 by a reactive drying of construction progress even under challenging climatic conditions. The new flexible waterproofing slurry AQUAFIN-2K/M-PLUS is a new development based on many years of experience and stands for reliable and proven safety with outstanding processing properties. The rigid waterproofing slurry AQUAFIN-1K is the perfect choice if a pre-waterproofing is required or there are no substrates prone to cracking. All the three waterproofing slurries as well as their application areas are introduced below.

CONTENTS

- 3 AQUAFIN-RS300
Rapid hybrid waterproofing
- 4 AQUAFIN-2K/M-PLUS
Crack-bridging waterproofing slurry
- 5 AQUAFIN-1K
Rigid waterproofing slurry
- 6 Areas of application and material
consumption



AQUAFIN®-RS300

The reactive one.

Rapid hybrid waterproofing.

For safe construction progress even with challenging climatic conditions.

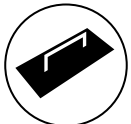


Properties

- Two-component.
- Multifunctional.
- Without seams or joints.
- Hydraulic, self-cross-linking setting.
- Rapid reactive drying, almost climate-independent.
- Ready for further processing after approx. 2-4 hours.
- Very low drying loss.
- Bonding on damp substrates without primers.
- Highly flexible and crack-bridging.
- Suitable for all load-bearing, conventional substrates.
- For interior and exterior use.
- Sulphate-resistant.



Rapidly walkable
2-4 hours



Smooth application
Very convenient



Flexible processing
Hand and machine

Technical data

Basis	Polymeric dispersion (liquid component), special cement and filter materials (powder component)
Processing / substrate temperature	+5 °C to +30 °C
Pot life*	approx. 45 minutes
Ready for further processing*	after approx. 2-4 hours
Processing	Hand, machine
Material consumption	see page 7
Packaging	10 kg and 20 kg combination container, 36 kg container unit

* at +23 °C and 50% rel. humidity



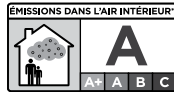
AQUAFIN®-2K/M-PLUS

The classic one.

Crack-bridging waterproofing slurry.

Flexible and reliable waterproofing with optimum processing properties.

NEW!



Properties

- Two-component.
- Without seams or joints.
- Flexible and crack-bridging.
- Suitable for all load-bearing, conventional substrates.
- Bonding on damp substrates without primers.
- Vapour-permeable, resistant to frost, UV and ageing-resistant.
- Resistant to de-icing salt.
- For interior and exterior use.
- Waterproofing.
- Sealing in combination (AIV).
- Resistant to concrete-damaging water according to DIN 4030.

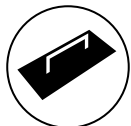
Technical data

Basis	Polymeric dispersion (liquid component), sand/cement, additives (powder component)
Processing / substrate temperature	+5 °C to +30 °C
Pot life*	approx. 60 minutes
Ready for further processing*	after approx. 3-6 hours
Processing	Hand, machine
Material consumption	see page 7
Packaging	21 kg combination container, 7 kg and 35 kg container unit

* at +23 °C and 50% rel. humidity



Long workability
60 minutes



Smooth application
Very convenient



Flexible processing
Hand and machine

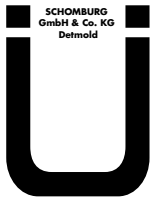


AQUAFIN®-1K

The rigid one.

Rigid waterproofing slurry.

The perfect choice if a pre-waterproofing is necessary or new formation of cracks can be excluded.



Properties

- One-component.
- Hydraulic setting.
- Sulphate-resistant.
- For interior and exterior use.
- Bonding on slightly damp substrates without primers.
- Usable according to DIN 18533.

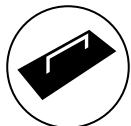
Technical data

Basis	Sand, cement (polymer-modified)
Processing / substrate temperature	+5 °C to +30 °C
Pot life*	approx. 60 minutes
Load*	after ca. 24 hours
Processing	Hand, machine
Material consumption	see page 7
Packaging	25 kg foil bag, 6 kg foil bag

* at +23 °C and 50% rel. humidity



**Long
workability**
60 minutes



**Smooth
application**
Very convenient

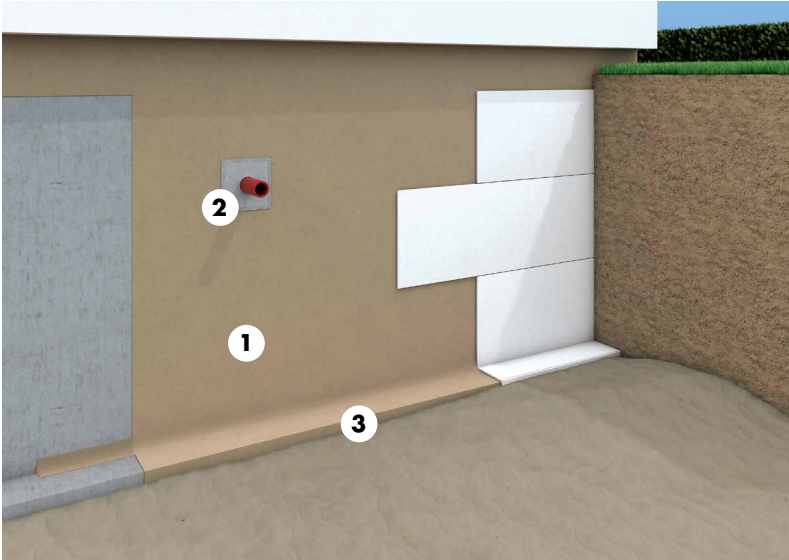


**Flexible
processing**
Hand and machine



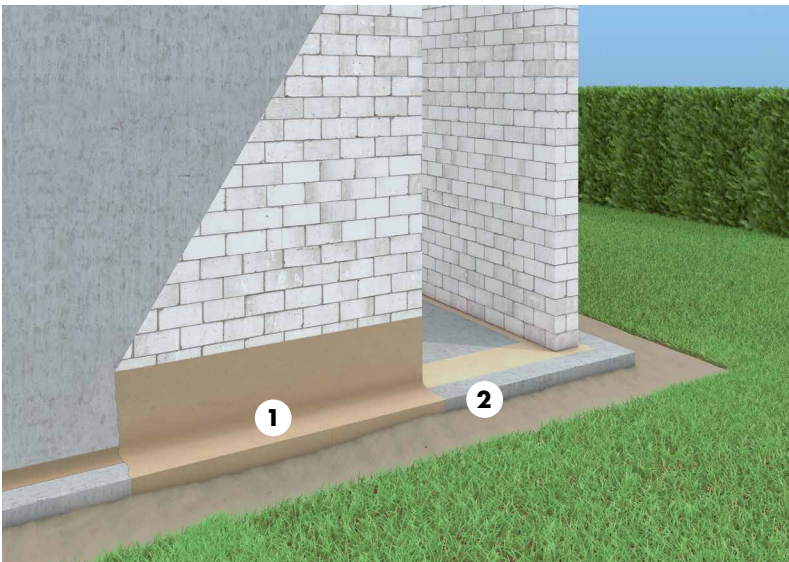
Areas of application and material consumption

As waterproofing according to DIN 18533, WTA technical data sheet 4-6 "Subsequent waterproofing"



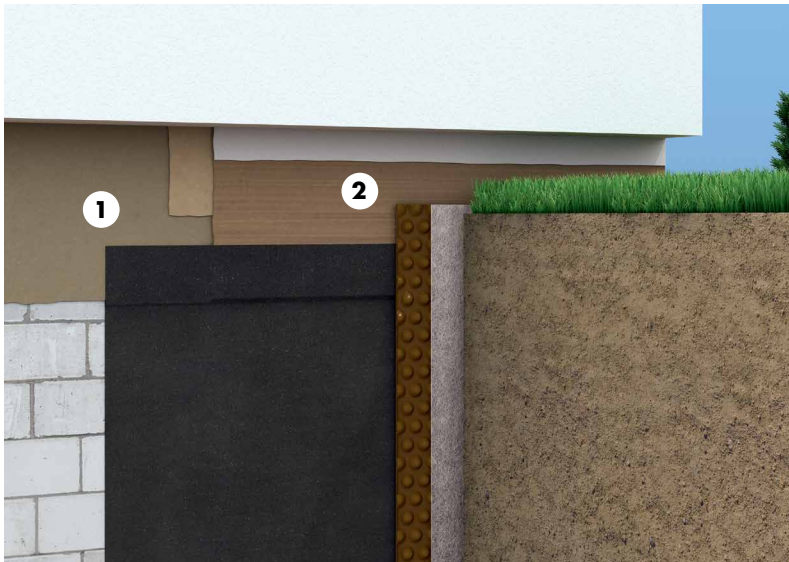
- 1 As waterproofing.
- 2 To bind ASO-Joint-Sleeves.
- 3 As sealing at foot of plinth.

Areas of application AQUAFIN-RS300 and AQUAFIN-2K/M-PLUS.



- 1 As waterproofing in plinth area without cellar.
- 2 As transverse waterproofing in and under walls.

Areas of application AQUAFIN-RS300 and AQUAFIN-2K/M-PLUS.



- 1 Waterproofing in plinth area with cellar.
- 2 As moisture protection for plaster in contact with earth.

Areas of application AQUAFIN-RS300 and AQUAFIN-2K/M-PLUS.

Material consumption

According to DIN 18533-3	Dry film thickness in mm	Wet film thickness in mm	AQUAFIN- RS300	AQUAFIN- 2K/M-PLUS	AQUAFIN- 1K
			Coverage in kg/m ²	Coverage in kg/m ²	Coverage in kg/m ²
Basement walls and floor slabs*	≥ 2	approx. 2.2	3.0	3.5	-
Plinth waterproofing	≥ 2	approx. 2.2	3.0	3.5	-
Transverse waterproofing	≥ 2	approx. 2.2	3.0	3.5	-
“Subsequent waterproofing” as per WTA data sheet 4–6					
Soil moisture / non-accumulating seepage water	≥ 2	approx. 2.2	3.0	3.5	-
Non-pressure water	≥ 2	approx. 2.2	3.0	3.5	-
Accumulating / pressing water	≥ 3	approx. 3.3	4.5	5.3	-
Levelling layers	1	approx. 1.1	1.5	1.75	1.75
Pre-waterproofing	1	approx. 1.1	-	-	1.75

Possible additional consumption in case of uneven substrates and manual variations must be considered.

* In case of water evaluation class W1-E and substrate concrete.

The SCHOMBURG group of companies develops, produces and distributes construction materials systems for the areas of:

- Waterproofing and Restoration
- Tiles / Natural Stone / Screed installation
- Protective Flooring / Coating Systems
- Concrete Technology

SCHOMBURG is recognized for its development competency and is distinguished both nationally and internationally with over 80 years in the market. System based construction materials from our own production enjoy a high reputation worldwide.

Industry professionals value the level of service provided by the SCHOMBURG Group, along with our large range of high quality products.

In order to stay at the forefront of a continuously advancing market we are always investing in research and development of new and current products. This guarantees high quality products, which in turn leads to customer satisfaction.

SCHOMBURG GmbH & Co. KG
Aquafinstrasse 2 - 8
D-32760 Detmold (Germany)
phone +49-5231-953-00
fax +49-5231-953-108
email export@schomburg.de
www.schomburg.com

